

BOM Table									
ITEM NO.	PART NUMBER	Rev.	Description	Material	FlameRating	Color	DC-59FMMT/QTY.	DC-59FMMT*01/QTY.	DC-59FMMT*03/QTY.
1	DC-57BFMBY	-.04	BASE	ABS	UL94-5VA	BLACK	1	-	-
2	DC-85CMBT	-.03	COVER: TEXTURED FLUSH	ABS	UL94-5VA	BLACK	1	-	-
3	DC-57BFMBY*01	-.04	BASE	ABS	UL94-5VA	GRAY	-	1	-
4	DC-85CMBT*01	-.03	COVER: TEXTURED FLUSH	ABS	UL94-5VA	GRAY	-	1	-
5	DC-57BFMBY*03	-.04	BASE	ABS	UL94-5VA	BONE	-	-	1
6	DC-85CMBT*03	-.03	COVER: TEXTURED FLUSH	ABS	UL94-5VA	BONE	-	-	1
7	SCREWS-DC2-BR	-	ASSEMBLY SCREW				6	6	6

F

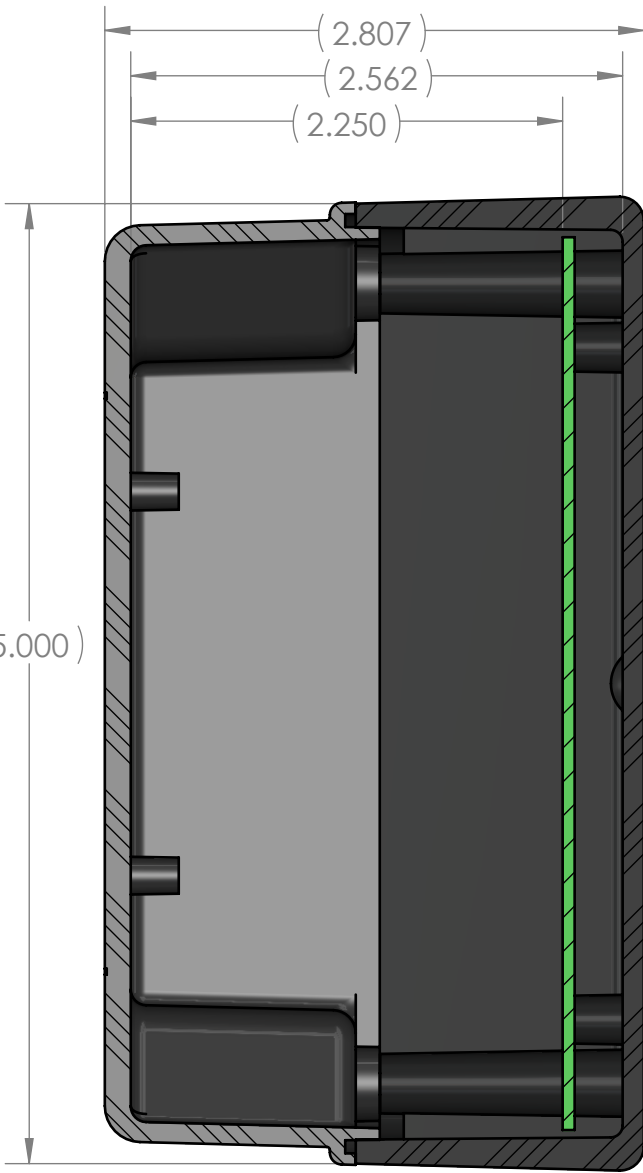
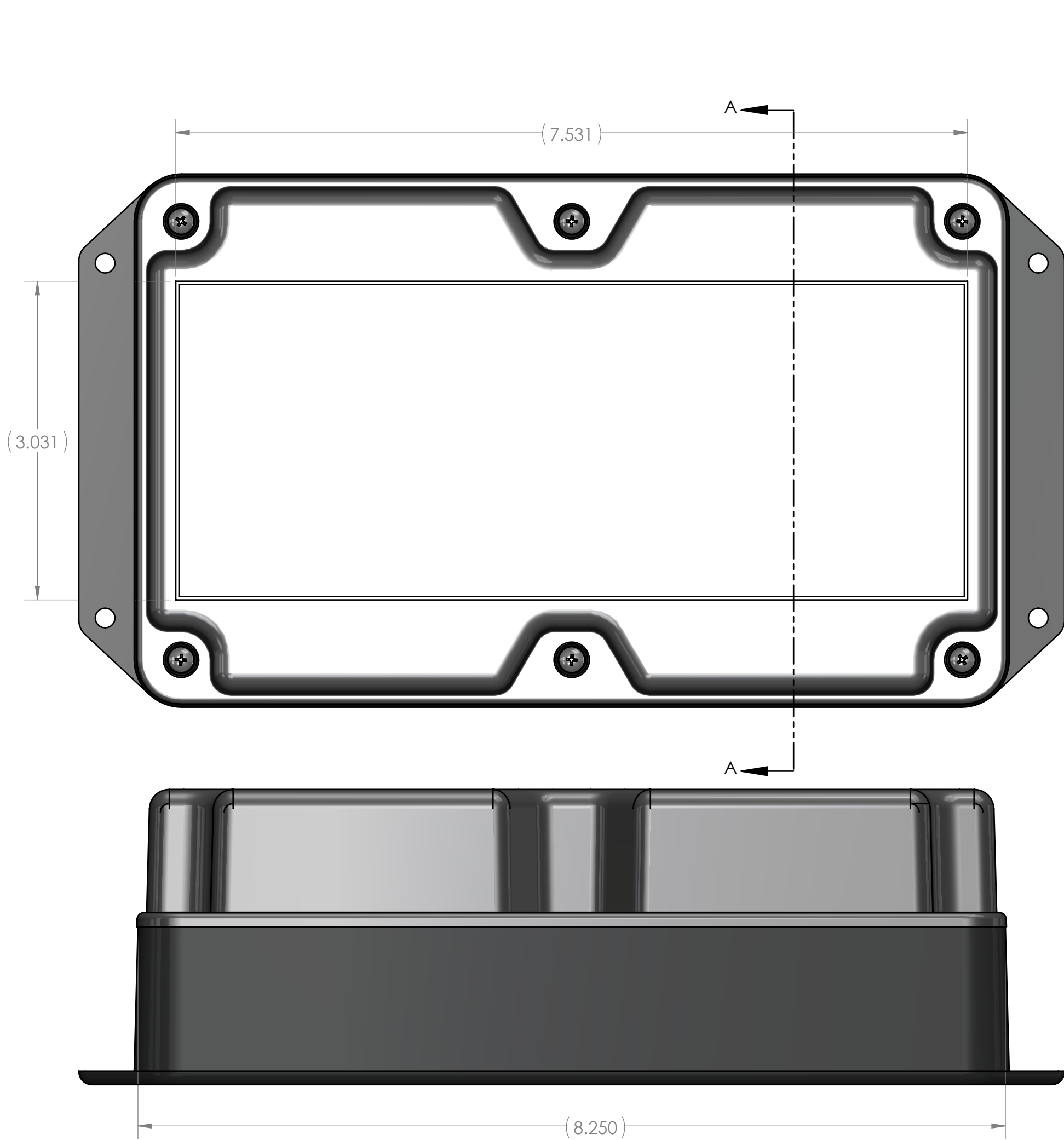
E

D

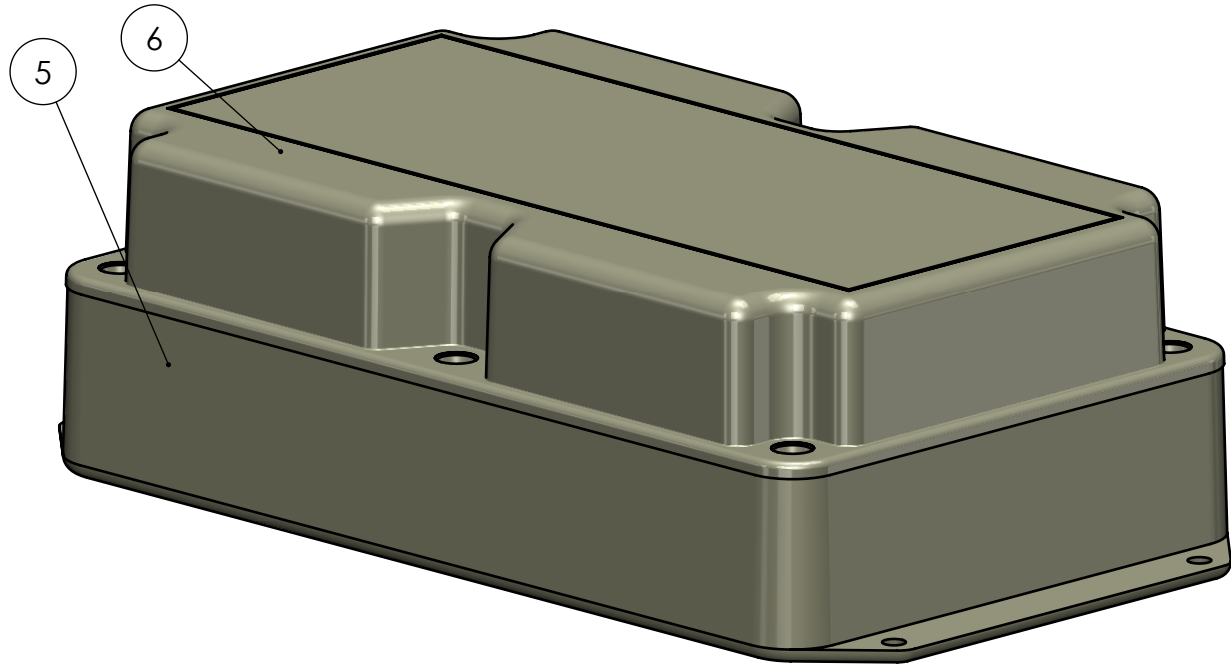
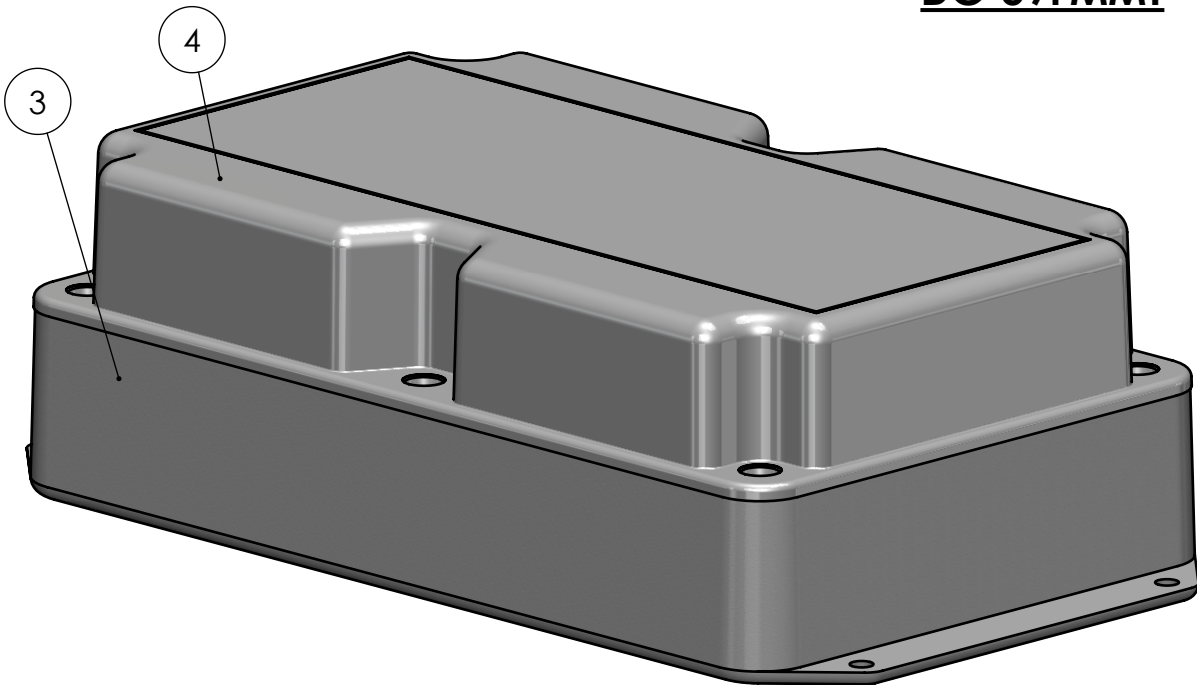
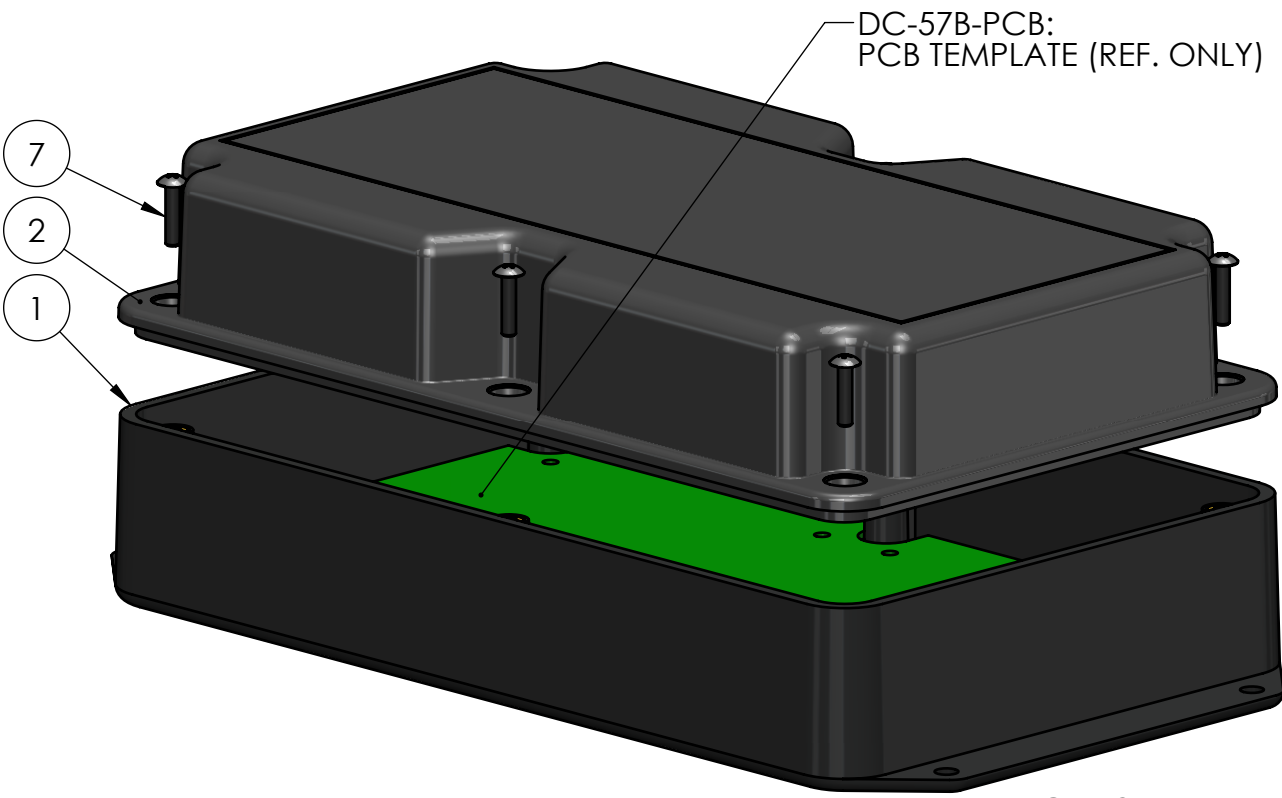
C

B

A



SECTION A-A



REV.	DESCRIPTION	ZONE	BY	APPR'D	DATE
REVISIONS					

UNLESS OTHERWISE SPECIFIED:
DIMENSIONS ARE IN: INCHES[mm]
TOLERANCES: ANGULAR: ±2°
TWO PLACE DECIMAL: ±.010
THREE PLACE DECIMAL: ±.005
PRINTED GRAPHICS: ±.010

PROPRIETARY AND CONFIDENTIAL
THE INFORMATION CONTAINED IN THIS
DRAWING IS THE SOLE PROPERTY OF
POLYCASE. ANY REPRODUCTION IN PART
OR AS A WHOLE WITHOUT THE WRITTEN
PERMISSION OF POLYCASE IS PROHIBITED.
CAD FILE: DC-59FMMT

PART NO.
DC-59FMMT
MATERIAL

FLAME RATING

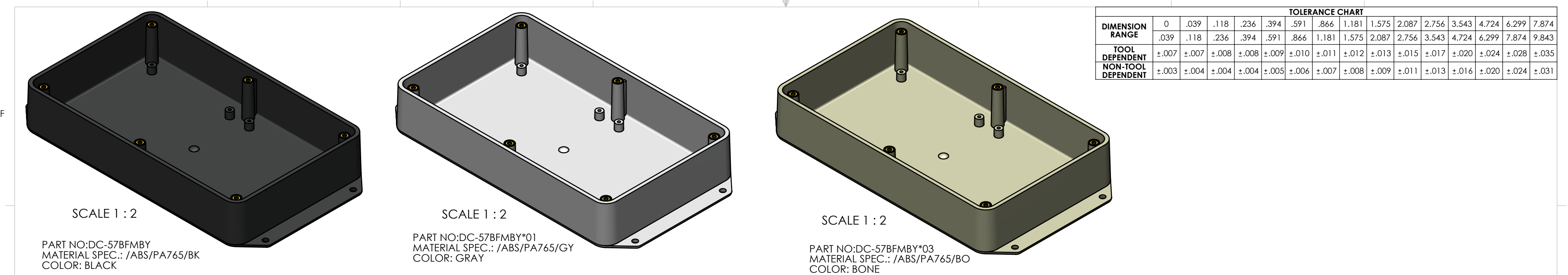
SIZE
C

SCALE: 1:1

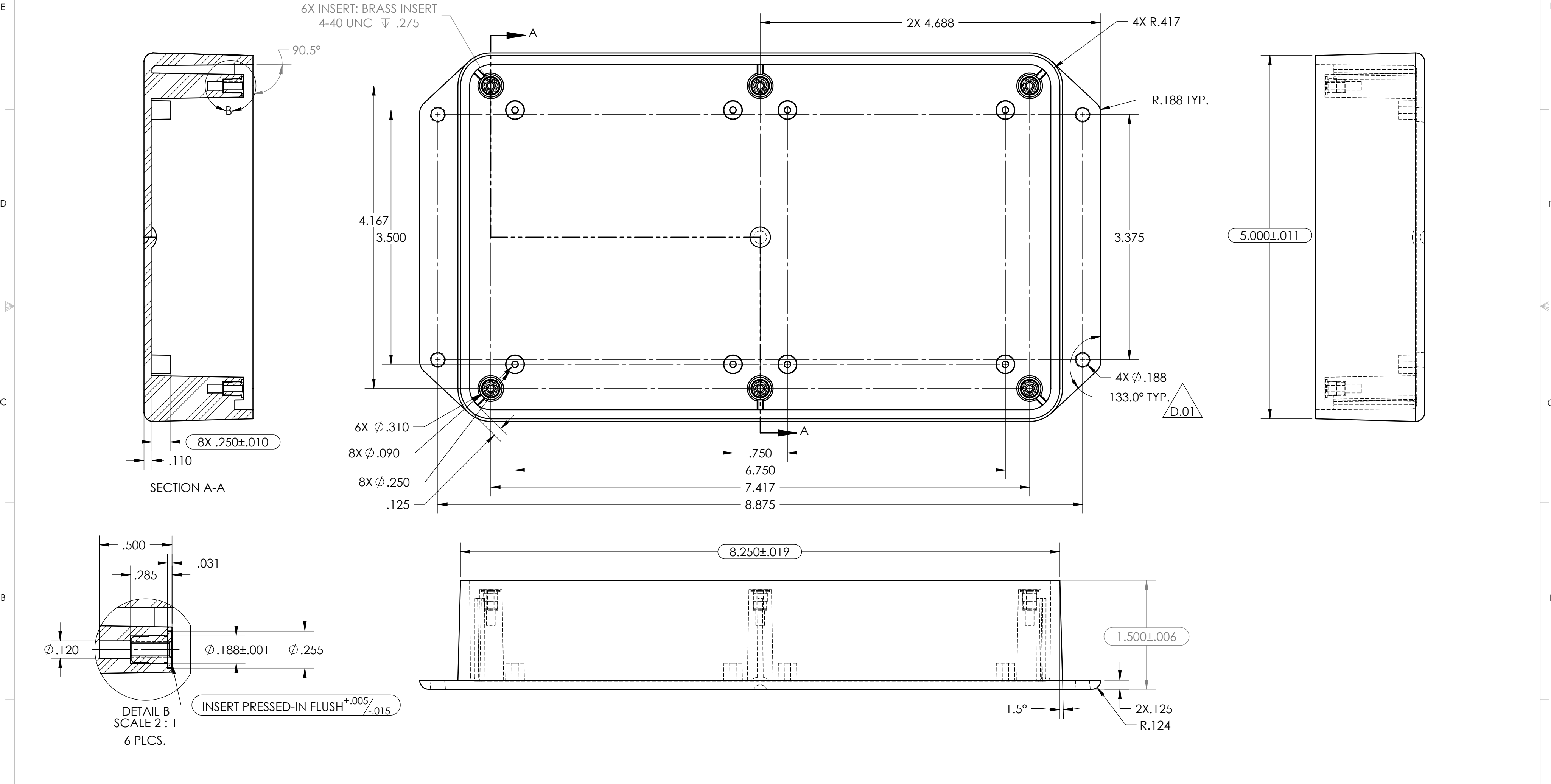
polycase
1305 CHESTER RD. PARKWAY AVON, OHIO 44011-1083 U.S.A.
PH: 1-800-248-1233, 440-934-0444 FAX: 440-934-0088

REV
-



SHEET 1 OF 1

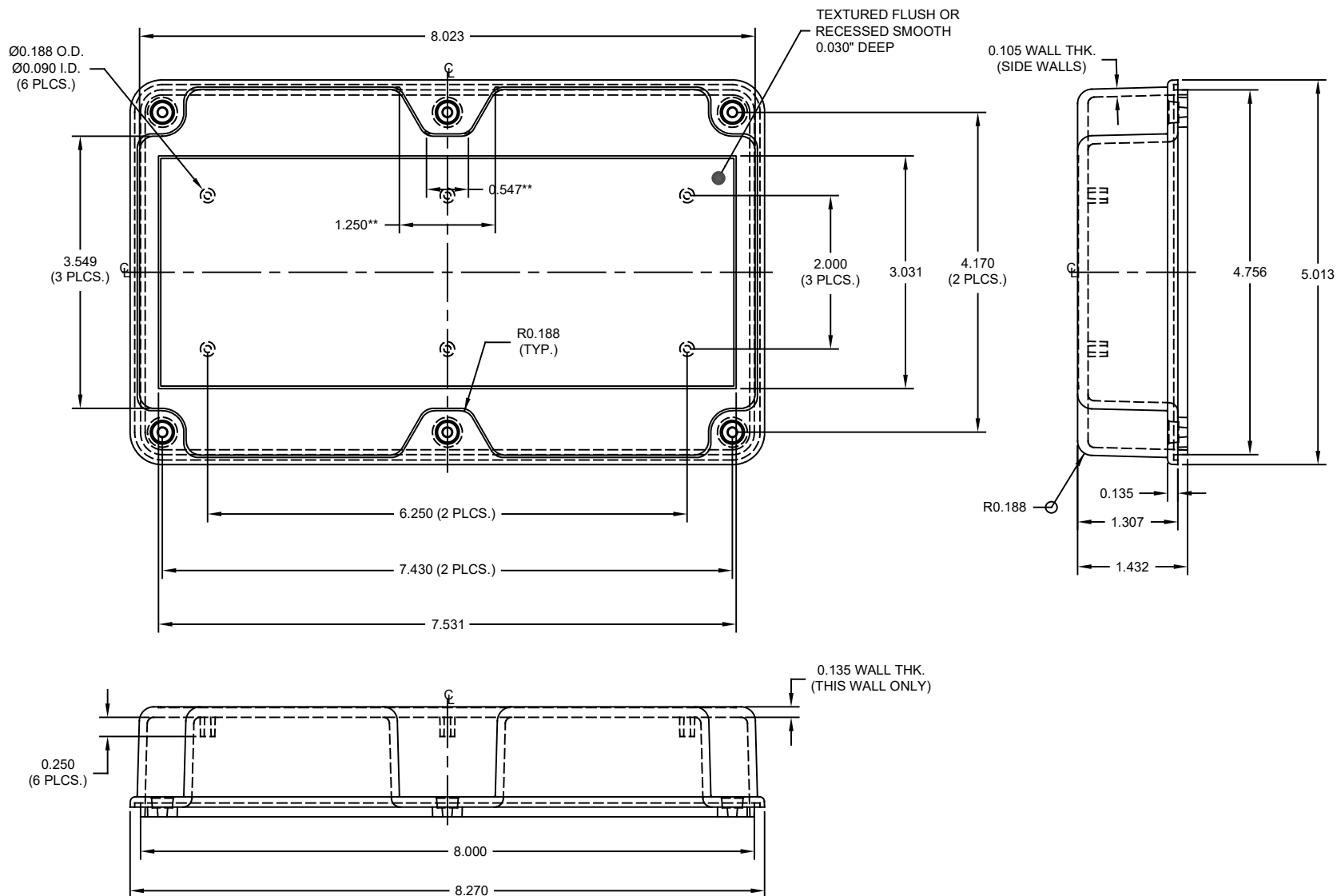


TOLERANCE CHART															
DIMENSION RANGE	0	.039	.118	.236	.394	.591	.866	1.181	1.575	2.087	2.756	3.543	4.724	6.299	7.874
	.039	.118	.236	.394	.591	.866	1.181	1.575	2.087	2.756	3.543	4.724	6.299	7.874	9.843
TOOL DEPENDENT	±.007	±.007	±.008	±.008	±.009	±.010	±.011	±.012	±.013	±.015	±.017	±.020	±.024	±.028	±.035
NON-TOOL DEPENDENT	±.003	±.004	±.004	±.004	±.005	±.006	±.007	±.008	±.009	±.011	±.013	±.016	±.020	±.024	±.031



- NOTES:
- REFER TO SOLID MODEL FOR COMPLETE PART DEFINITION.
 - (INSPECTION DIMENSION)
 - EJECTOR PINS FLUSH ±.010
 - GATE FLUSH $\frac{+.000}{-.015}$
 - FLASH .005 MAX

						UNLESS OTHERWISE SPECIFIED: DIMENSIONS ARE IN: INCHES[mm] TOLERANCES: ANGULAR: ±2° TWO PLACE DECIMAL: ± THREE PLACE DECIMAL: ± PRINTED GRAPHICS: ±.010		PART NO. DC-57BFMBY MATERIAL ABS		 1393 CHESTER RD., PARKWAY AVENUE, OHIO 44011-1083 U.S.A. PH: 1-800-240-1221, 440-754-0444 FAX: 440-754-0089	
D.01	133° WAS 135°	C2	D.M.F.		2/15/2017	PROPRIETARY AND CONFIDENTIAL THE INFORMATION CONTAINED IN THIS DRAWING IS THE SOLE PROPERTY OF POLYCASE. ANY REPRODUCTION IN PART OR AS A WHOLE WITHOUT THE WRITTEN PERMISSION OF POLYCASE IS PROHIBITED. CAD FILE: DC-57BFMBY		FLAME RATING UL94-5VA		SIZE C	BASE REV D.01
REV.	DESCRIPTION	ZONE	BY	APPR'D	DATE	DRAWN CHECKED		NAME D.M.F.	DATE 2/1/2017 5/24/2013	SCALE: 1:1	 SHEET 1 OF 1
REVISIONS											



NOTES:

- ** DIMENSION TO SHARP CORNER
- MOUNTING BOSSES ACCEPT A #4 SELF TAPPING OR THREAD FORMING SCREW

POLYCASE YOUR PERFECT FIT					DRWN BY	APP. BY	SCALE	DATE
TOLERANCES UNLESS OTHERWISE SPECIFIED X.XX ± 0.020 X.XXX ± 0.010					B.B.		FULL	01/17/02
1305 CHESTER RD. PARKWAY AVE. OHIO 44011 U.S.A. P.O. BOX 1234 44012-0123 FAX 440-345-6789					JOB NO.		PRODUCT:	DC-85CMB
THIS DRAWING AND THE INFORMATION CONTAINED HEREIN IS THE PROPERTY OF POLYCASE AND IT IS NOT TO BE REPRODUCED, COPIED OR USED IN ANY WAY OR TRADED TO THE INTEREST OF POLYCASE.					CUSTOMER:			
REV					DESCRIPTION			
BY					CHK			
DATE					TITLE: PRODUCT DETAIL DRAWING			

